

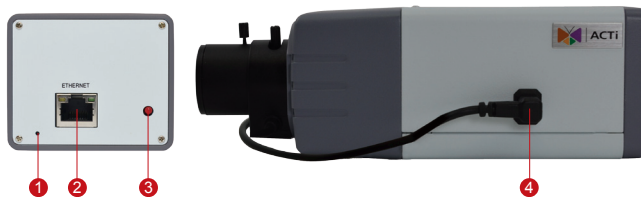
# E24

3MP Box with D/N,  
Superior WDR, Vari-focal lens



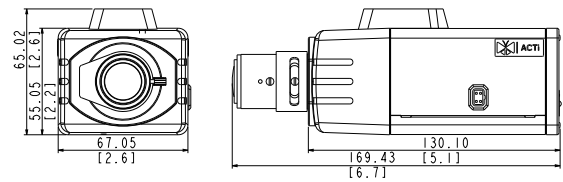
- Progressive Scan CMOS
- Day and night function with mechanical IR cut filter
- Minimum illumination 0.05 lux at F1.4
- Bundled f2.8-12mm / F1.4 Megapixel vari-focal lens
- 15 fps at 2048 x 1536 resolution
- Selectable H.264 HP, MJPEG compressions with dual streaming
- Video Motion Detection
- Superior WDR
- Powered by PoE Class 2

## PHOTO INDICATION



- 1 Reset Button
- 2 Ethernet Port
- 3 Power LED
- 4 DC Iris Port

## DIMENSION DIAGRAM



Unit: mm [inch]

## ACCESSORY OPTIONS

| Lens      |  |   |
|-----------|--|---|
| PLEN-0205 |  | IR Compatible, DC Iris, F1.6, 8 mm - 80mm, 30.6° - 3.7° |

| Popular Mounting Solutions |                                     |  |
|----------------------------|-------------------------------------|--|
| Corner                     | PMAX-0202<br>PMAX-1101<br>PMAX-0402 |  |
| Pole                       | PMAX-0202<br>PMAX-1101<br>PMAX-0503 |  |

\* For more mounting solutions, please refer to Mounting Accessory section of Buyer's Guide or Project Planner on [www.acti.com](http://www.acti.com)

| Outdoor Housing & Bracket |  |  |
|---------------------------|--|--|
| PMAX-0200                 |  | IP66, with heater and fan powered by 110V AC, -30 °C ~ 50 °C (-22 °F ~ 122 °F), requires housing bracket |
| PMAX-0201                 |  | IP66, with heater and fan powered by 220V AC, -30 °C ~ 50 °C (-22 °F ~ 122 °F), requires housing bracket |
| PMAX-0202                 |  | IP66, -10°C ~ 50°C (14 °F ~ 122 °F), requires housing bracket  |
| PMAX-1101                 |  | Aluminum, max. load 10 kg (22.05 lb), tilt angle 90° (For PMAX-0200, PMAX-0201, PMAX-0202)               |

| Camera Bracket |  |   |
|----------------|--|---|
| PMAX-1100      |  | Plastic, max. load 3.5 kg (7.72 lb), tilt angle 90° |

## PRODUCT SPECIFICATION

### E24

#### • Device

|                          |   |
|--------------------------|---|
| Device Type              | Box Camera  |
| Image Sensor             | Progressive Scan CMOS   |
| Sensor Size              | 1/3" (5.8 x 4.6 mm)   |
| Day / Night              | Yes   |
| Minimum Illumination     | Color: 0.1 lux at F1.4 (30 IRE, 2400°K); B/W: 0.05 lux at F1.4 (30 IRE, 2400°K) |
| Color to B/W switch      | ISP based switch; Configurable  |
| Mechanical IR Cut Filter | Yes   |
| IR Sensitivity Range     | 700 - 1100 nm   |
| IR LED                   | No  |
| Electronic Shutter       | 1/5 ~ 1/2,000 sec (manual mode); 1/5 ~ 1/10,000 sec (auto mode)                 |

#### • Lens

|                          |                                 |
|--------------------------|---------------------------------|
| Focal Length / Aperture  | Vari-focal, f2.8 - 12 mm / F1.4 |
| Iris                     | DC iris                         |
| Focus                    | Manual focus                    |
| Lens Mount               | CS Mount (interchangeable lens) |
| Horizontal Viewing Angle | 78.1° - 26.8°                   |

#### • Video

|                                   |   |
|-----------------------------------|---|
| Compression                       | H.264 HP, MJPEG   |
| Maximum Frame Rate vs. Resolution | 15 fps at 2048 x 1536; 30 fps at 1920 x 1080; 30 fps at 1280 x 720; 30 fps at 640 x 480   |
| Multi-Streaming                   | Simultaneous dual streams based on two configurations   |
| Bit Rate                          | 28 Kbps - 6 Mbps (per stream)   |
| Bit Rate Mode                     | Constant, Variable  |
| Image Enhancement                 | Superior WDR; White Balance: automatic, hold and manual; Brightness; Contrast; Sharpness(auto); Auto gain control; Digital noise reduction; Flickerless |
| Privacy Mask                      | 4 configurable regions  |
| Text Overlay                      | User defined text on video  |
| Image Orientation                 | Image flip and mirror   |

#### • Network

|                    |  |
|--------------------|--|
| Protocol & Service | TCP, UDP, HTTP, HTTPS, DHCP, PPPoE, RTP, RTSP, IPv6, DNS, DDNS, NTP, ICMP, ARP, IGMP, SMTP, FTP, UPnP, SNMP, Bonjour       |
| Ethernet Port      | 1, Ethernet (10/100 Base-T), RJ-45 connector   |
| Security           | IP address filtering; HTTPs encryption; Password protected user levels; Anonymous login; IEEE802.1X network access control |

#### • Alarm

|                |  |
|----------------|--|
| Alarm Trigger  | Video motion detection (3 regions)   |
| Alarm Response | Notify control center; Change camera settings; Command other devices; E-mail notification with snapshots; Upload video, snapshot to FTP server |

#### • Interface

|                   |                                     |
|-------------------|-------------------------------------|
| DC Iris Connector | External connector for DC iris lens |
|-------------------|-------------------------------------|

#### • General

|                            |   |
|----------------------------|---|
| Power Source / Consumption | PoE Class 2 (IEEE802.3af) / 3.645W                              |
| Weight                     | 434.5g (0.958 lb)   |
| Dimensions (W x H x D)     | 67.05mm x 65.02mm x 169.89mm (2.6" x 2.6" x 6.7")               |
| Environmental Casing       | Optional housing (IP 66 rated)                                  |
| Mount Type                 | Wall, Ceiling, Corner, Pole                                     |
| Operating Temperature      | -10°C ~ 50°C (14°F ~ 122°F)                                     |
| Operating Humidity         | 10% ~ 85% RH  |
| Approvals                  | CE (EN 55022 Class B, EN 55024), FCC (Part15 Subpart B Class B) |

#### • Integration

|                         |  |
|-------------------------|--|
| Unified Solution        | Fully compatible with ACTi software  |
| ISV Integration         | Software Development Kit (SDK) available; ONVIF compliant  |
| Firmware Access Browser | Microsoft Internet Explorer 8.0 or newer (full functionality); Other browsers with VLC installed (partial functionality) |